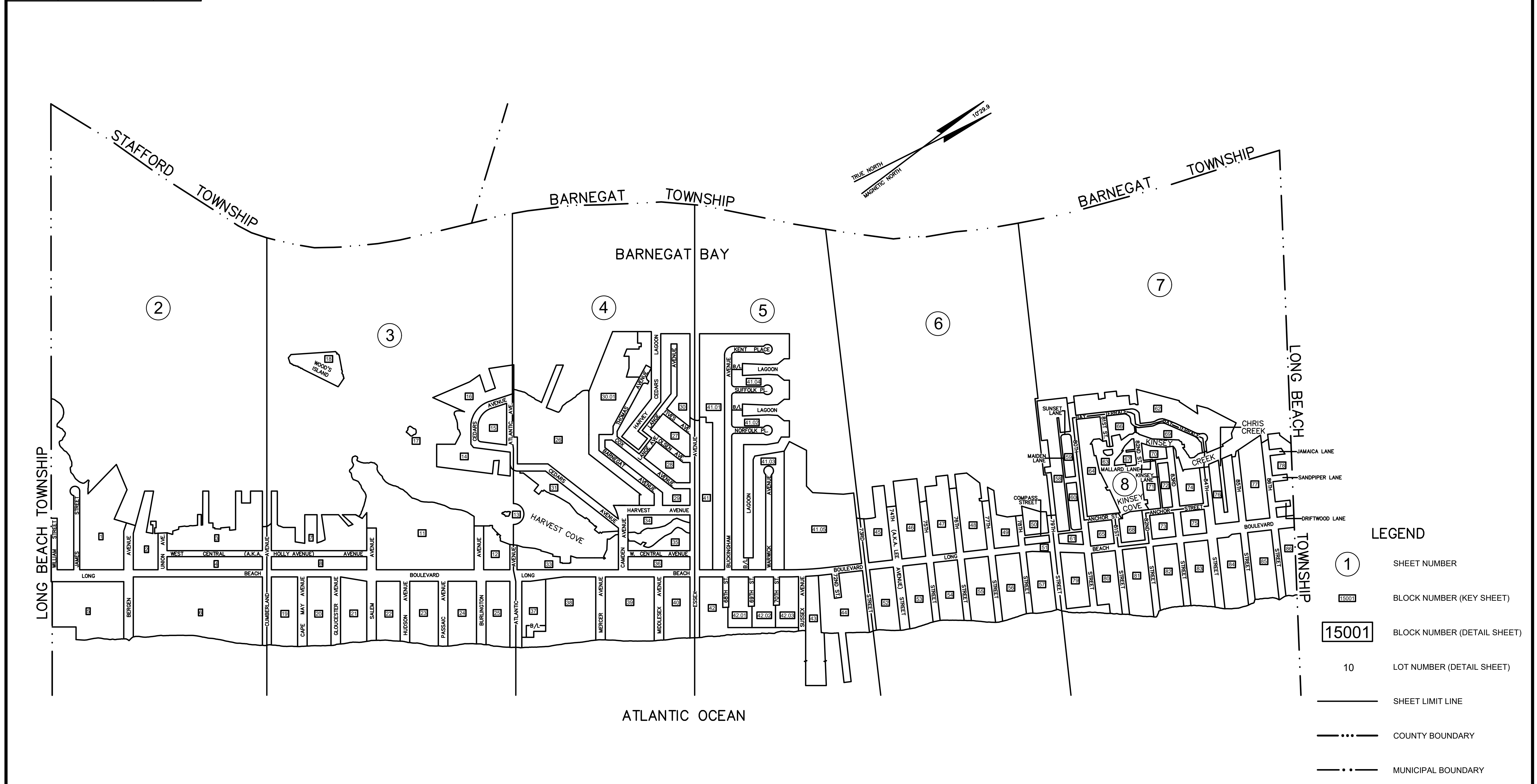


TO SHOW CONDITIONS AS OF		
1-6-2009	WILLIAM J. BERG	24GS03622800



LEGEND

- 1 SHEET NUMBER
- 15001 BLOCK NUMBER (KEY SHEET)
- 15001 BLOCK NUMBER (DETAIL SHEET)
- 10 LOT NUMBER (DETAIL SHEET)
- SHEET LIMIT LINE
- - - COUNTY BOUNDARY
- · - MUNICIPAL BOUNDARY

NOTES:

1. THIS MAP HAS BEEN REDRAWN USING COMPUTER AIDED DRAFTING/DESIGN (CAD/D) BASED ON THE MAP PREPARED BY FERNANDEZ, JORLETT, KIEF & TRACEY.
2. THE ABOVE REFERENCED TAX MAPPING WAS LAST APPROVED BY THE NEW JERSEY DEPARTMENT OF THE TREASURY, DIVISION OF TAXATION, PUBLIC UTILITY TAX BUREAU ON MAY 20, 1970, SERIAL NO. 489.
3. THE ORIGINAL APPROVED MAP IS ON FILE IN THE TOWNSHIP ASSESSORS OFFICE.

TAX MAP

BOROUGH OF HARVEY CEDARS
OCEAN COUNTY, NEW JERSEY

SCALE: 1"=400'

PREPARED BY:
FERNANDEZ, JORLETT, KIEF & TRACEY
 PROFESSIONAL ENGINEERS & LAND SURVEYORS
 16TH & LONG BEACH BOULEVARD, SHIP BOTTOM, NJ 08008
 DATED MARCH 11, 1969

REVISIONS

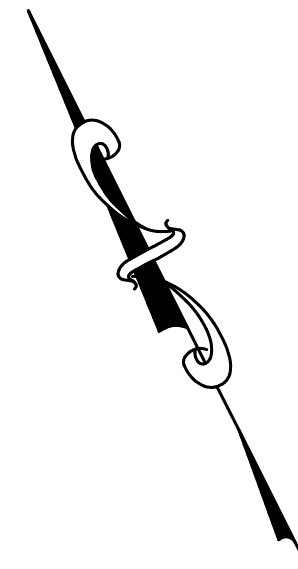
1-6-2009	WILLIAM J. BERG	24GS03622800
12-15-2009	WILLIAM J. BERG	24GS03622800
12-15-2010	WILLIAM J. BERG	24GS03622800
12-16-2013	WILLIAM J. BERG	24GS03622800
12-11-2014	WILLIAM J. BERG	24GS03622800
12-06-2017	WILLIAM J. BERG	24GS03622800
1-1-2019	WILLIAM J. BERG	24GS03622800

REVISED BY FERNANDEZ, JORLETT, KIEF & TRACEY
TO SHOW CONDITIONS AS OF MAR. 1969
REVISED MAR. 1972

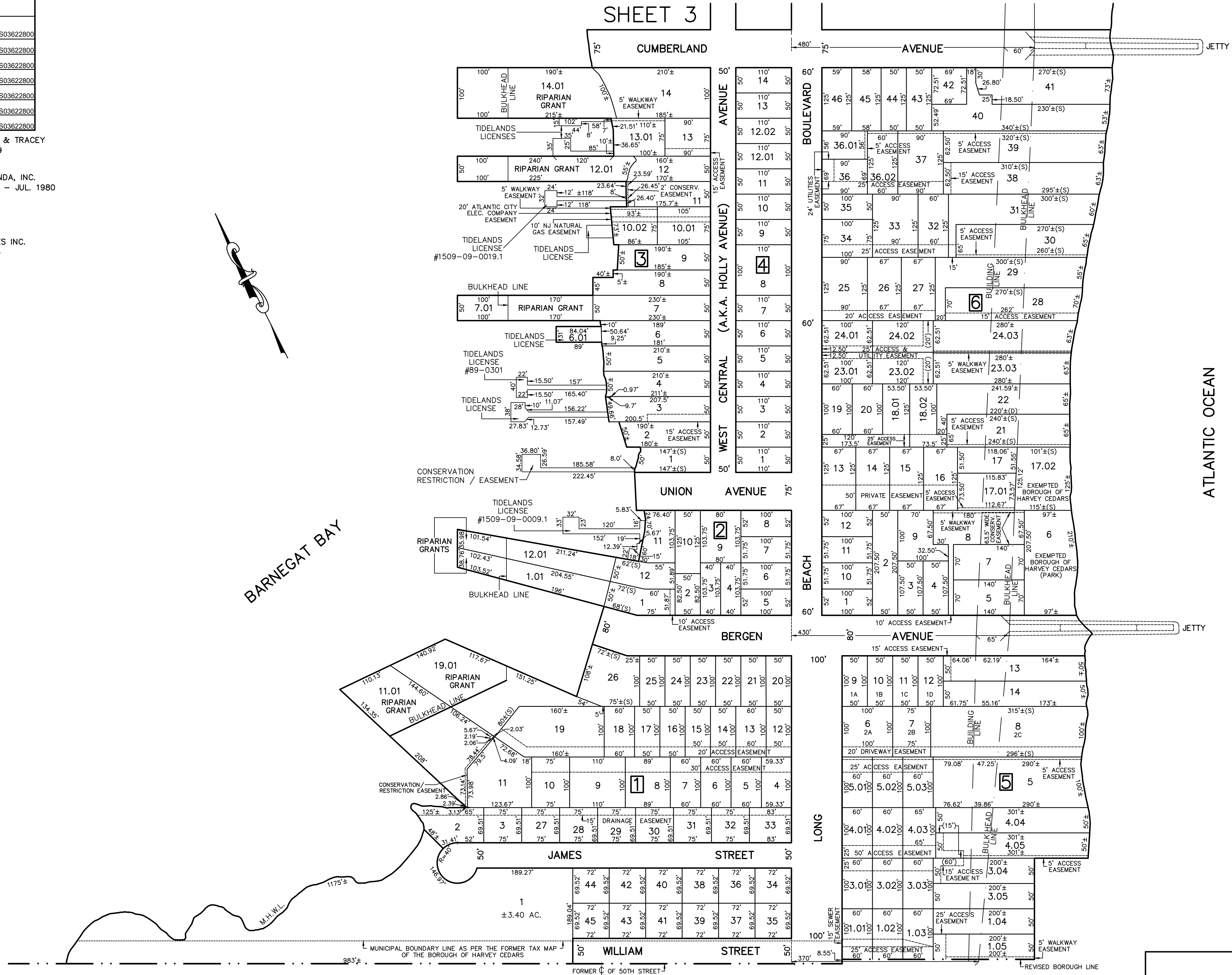
REVISED BY WILCOX, GRAVATT & HACUNDA, INC.
TO SHOW CONDITIONS AS OF JUL. 1977 - JUL. 1980

REVISED BY WILCOX & GRAVATT, INC.
TO SHOW CONDITIONS AS OF JUL. 1980
REVISED OCT. 1984

REVISED BY OWEN, LITTLE & ASSOCIATES INC.
TO SHOW CONDITIONS AS OF DEC. 1985
REVISED DEC. 1986 - JAN. 2008



SHEET 3



NOTES:

1. THIS MAP HAS BEEN REDRAWN USING COMPUTER AIDED DRAFTING/DESIGN (CAD/D) BASED ON THE MAP PREPARED BY FERNANDEZ, JORLETT, KIEF & TRACEY.
2. THE ABOVE REFERENCED TAX MAPPING WAS LAST APPROVED BY THE NEW JERSEY DEPARTMENT OF THE TREASURY, DIVISION OF TAXATION, PUBLIC UTILITY TAX BUREAU ON MAY 20, 1970, SERIAL NO. 489.
3. THE ORIGINAL APPROVED MAP IS ON FILE IN THE TOWNSHIP ASSESSORS OFFICE.
4. ALL LOTS THAT CONTAIN LAND EAST OF THE BULKHEAD LINE ARE SUBJECT TO A DEED OF DEDICATION AND PERPETUAL STORM DAMAGE REDUCTION EASEMENT.

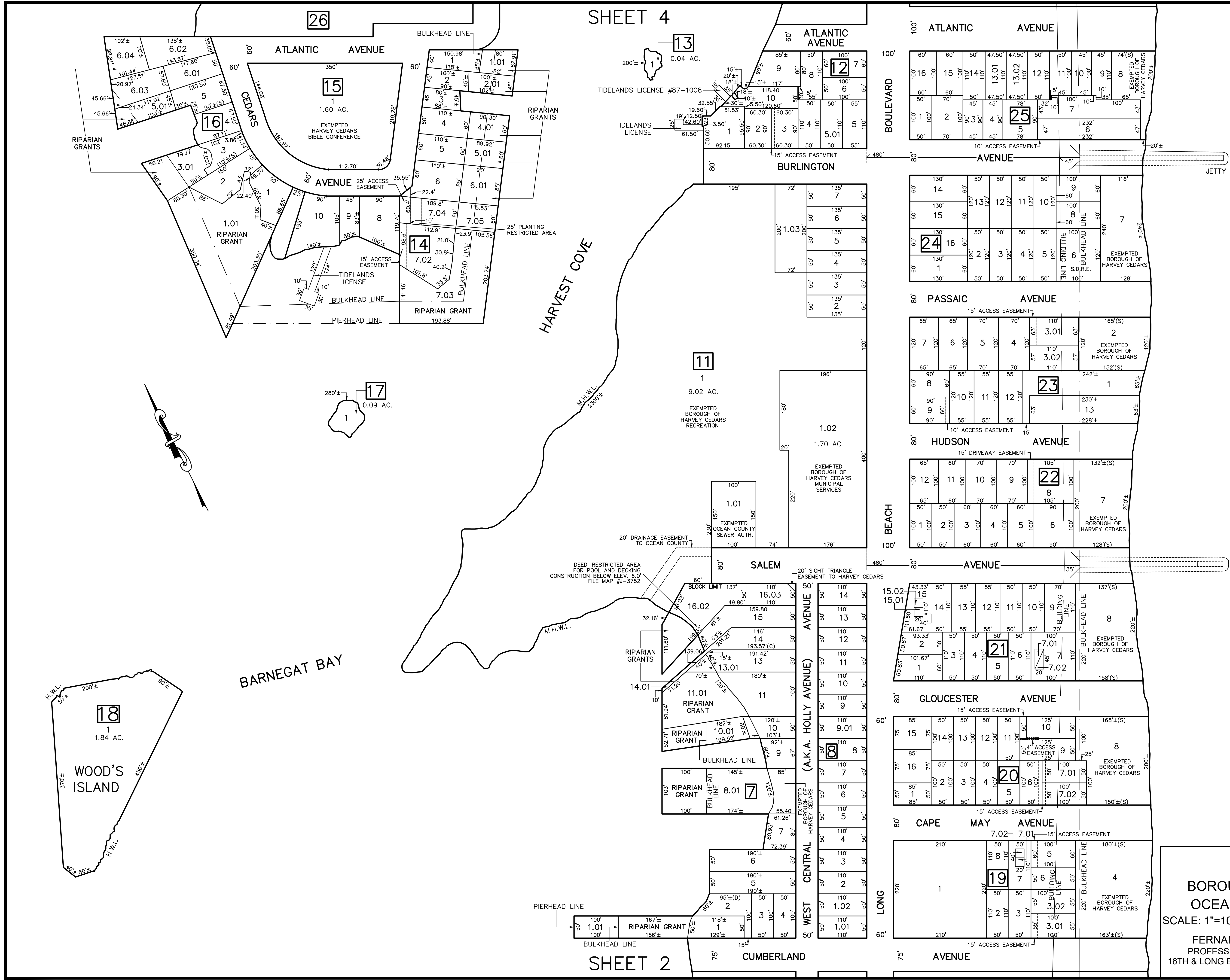
TAX MAP

BOROUGH OF HARVEY CEDARS
OCEAN COUNTY, NEW JERSEY

SCALE: 1"=100'

PREPARED BY:
FERNANDEZ, JORLETT, KIEF & TRACEY
PROFESSIONAL ENGINEERS & LAND SURVEYORS
16TH & LONG BEACH BOULEVARD, SHIP BOTTOM, NJ 08008
DATED MARCH 11, 1969

SHEET 4



REVISIONS		
1-6-2009	WILLIAM J. BERG	24GS03622800
12-15-2009	WILLIAM J. BERG	24GS03622800
12-15-2010	WILLIAM J. BERG	24GS03622800
12-16-2013	WILLIAM J. BERG	24GS03622800
12-11-2014	WILLIAM J. BERG	24GS03622800
12-13-2016	WILLIAM J. BERG	24GS03622800

REVISED BY FERNANDEZ, JORLETT, KIEF & TRACEY TO SHOW CONDITIONS AS OF MAR. 1969
REVISED MAR. 1972

REVISED BY WILCOX, GRAVATT & HACUNDA, INC. TO SHOW CONDITIONS AS OF JUL. 1977 - JUL. 1980

REVISED BY WILCOX & GRAVATT, INC. TO SHOW CONDITIONS AS OF JUL. 1980
REVISED OCT. 1984

REVISED BY OWEN, LITTLE & ASSOCIATES INC. TO SHOW CONDITIONS AS OF DEC. 1985
REVISED DEC. 1986 - JAN. 2008

S.D.R.E.
DEED OF DEDICATION AND PERPETUAL STORM DAMAGE REDUCTION EASEMENT.

- NOTES:**
1. THIS MAP HAS BEEN REDRAWN USING COMPUTER AIDED DRAFTING/DESIGN (CAD/D) BASED ON THE MAP PREPARED BY FERNANDEZ, JORLETT, KIEF & TRACEY.
 2. THE ABOVE REFERENCED TAX MAPPING WAS LAST APPROVED BY THE NEW JERSEY DEPARTMENT OF THE TREASURY, DIVISION OF TAXATION, PUBLIC UTILITY TAX BUREAU ON MAY 20, 1970, SERIAL NO. 489.
 3. THE ORIGINAL APPROVED MAP IS ON FILE IN THE TOWNSHIP ASSESSORS OFFICE.
 4. ALL LOTS THAT CONTAIN LAND EAST OF THE BULKHEAD LINE ARE SUBJECT TO A DEED OF DEDICATION AND PERPETUAL STORM DAMAGE REDUCTION EASEMENT.

TAX MAP

BOROUGH OF HARVEY CEDARS
OCEAN COUNTY, NEW JERSEY

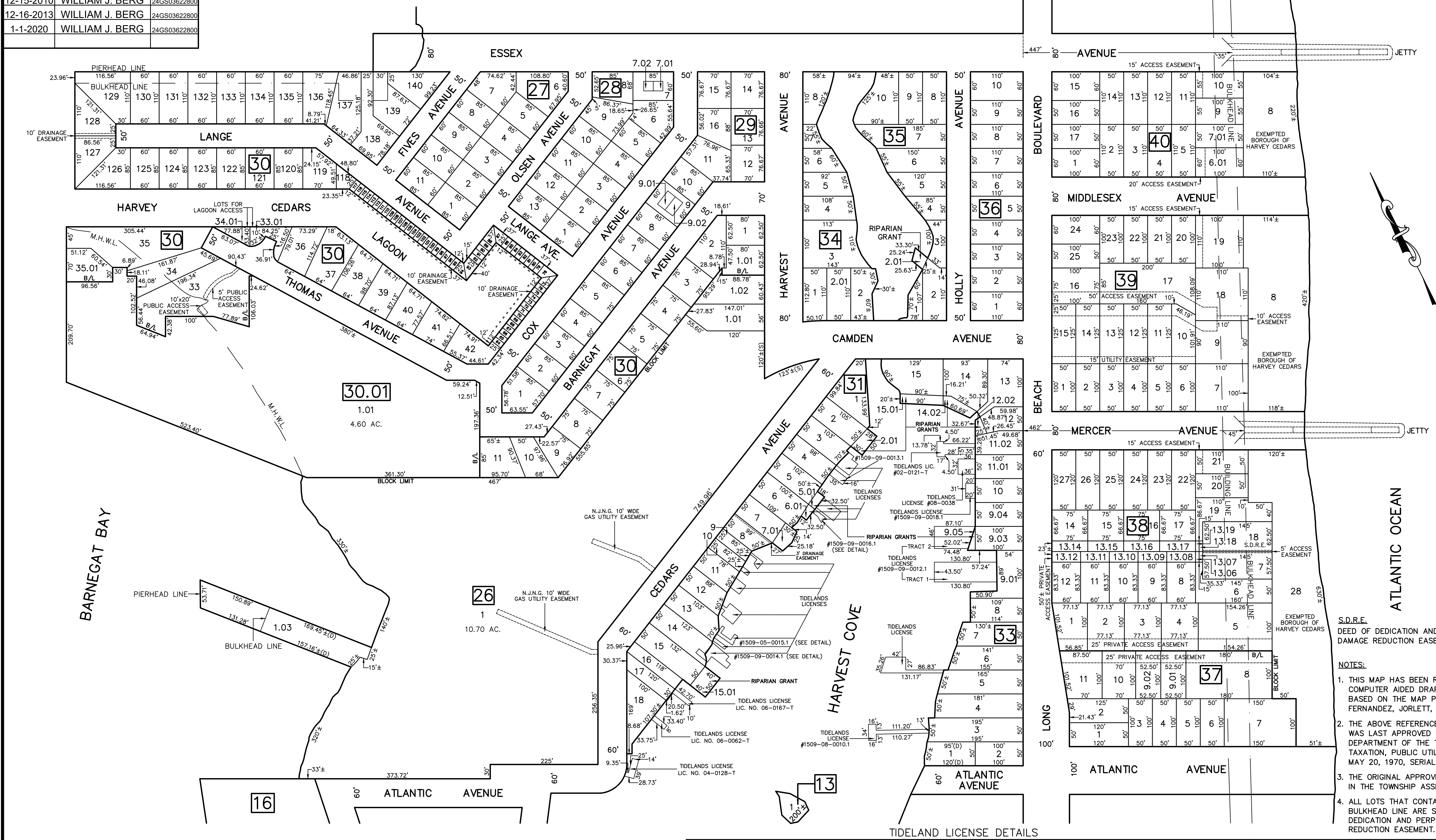
SCALE: 1"=100'

PREPARED BY:
FERNANDEZ, JORLETT, KIEF & TRACEY
PROFESSIONAL ENGINEERS & LAND SURVEYORS
16TH & LONG BEACH BOULEVARD, SHIP BOTTOM, NJ 08008
DATED MARCH 11, 1969

SHEET 2

REVISIONS		
1-6-2009	WILLIAM J. BERG	24GS03622800
12-15-2009	WILLIAM J. BERG	24GS03622800
12-15-2010	WILLIAM J. BERG	24GS03622800
12-16-2013	WILLIAM J. BERG	24GS03622800
1-1-2020	WILLIAM J. BERG	24GS03622800

SHEET 5



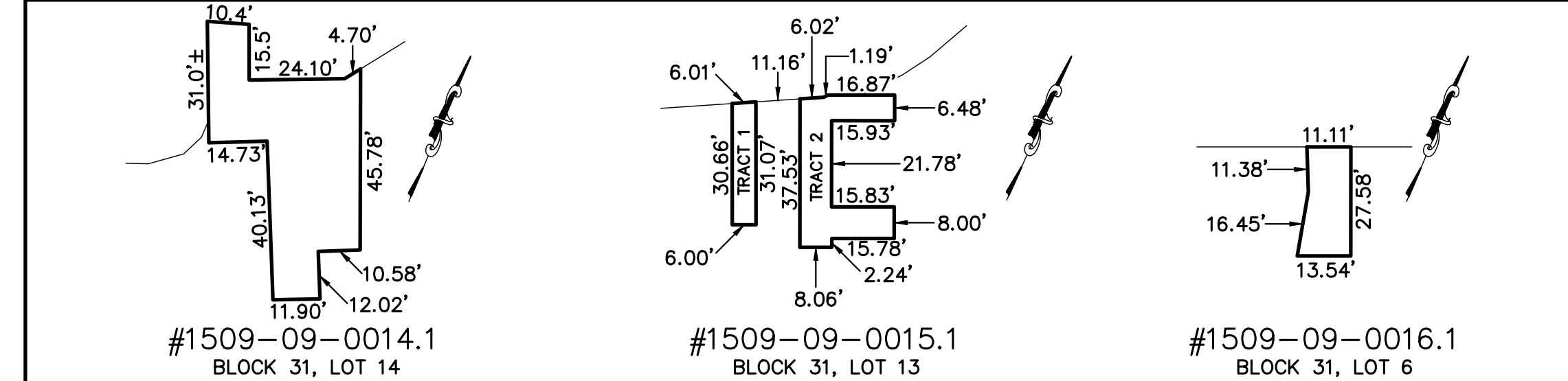
REVISED BY FERNANDEZ, JORLETT, KIEF & TRACEY TO SHOW CONDITIONS AS OF MAR. 1969
REVISED MAR. 1972

REVISED BY WILCOX, GRAVATT & HACUNDA, INC. TO SHOW CONDITIONS AS OF JUL. 1977 - JUL. 1980

REVISED BY WILCOX & GRAVATT, INC. TO SHOW CONDITIONS AS OF JUL. 1980
REVISED OCT. 1984

REVISED BY OWEN, LITTLE & ASSOCIATES INC. TO SHOW CONDITIONS AS OF DEC. 1985
REVISED DEC. 1986 - JAN. 2008

SHEET 3



TAX MAP

BOROUGH OF HARVEY CEDARS
OCEAN COUNTY, NEW JERSEY

SCALE: 1"=100'

PREPARED BY:
FERNANDEZ, JORLETT, KIEF & TRACEY
PROFESSIONAL ENGINEERS & LAND SURVEYORS
16TH & LONG BEACH BOULEVARD, SHIP BOTTOM, NJ 08008
DATED MARCH 11, 1969

- NOTES:**
- THIS MAP HAS BEEN REDRAWN USING COMPUTER AIDED DRAFTING/DESIGN (CAD/D) BASED ON THE MAP PREPARED BY FERNANDEZ, JORLETT, KIEF & TRACEY.
 - THE ABOVE REFERENCED TAX MAPPING WAS LAST APPROVED BY THE NEW JERSEY DEPARTMENT OF THE TREASURY, DIVISION OF TAXATION, PUBLIC UTILITY TAX BUREAU ON MAY 20, 1970, SERIAL NO. 489.
 - THE ORIGINAL APPROVED MAP IS ON FILE IN THE TOWNSHIP ASSESSORS OFFICE.
 - ALL LOTS THAT CONTAIN LAND EAST OF THE BULKHEAD LINE ARE SUBJECT TO A DEED OF DEDICATION AND PERPETUAL STORM DAMAGE REDUCTION EASEMENT.

REVISIONS		
1-6-2009	WILLIAM J. BERG	24GS03622800
12-15-2009	WILLIAM J. BERG	24GS03622800
12-13-2016	WILLIAM J. BERG	24GS03622800
12-06-2017	WILLIAM J. BERG	24GS03622800
1-1-2019	WILLIAM J. BERG	24GS03622800

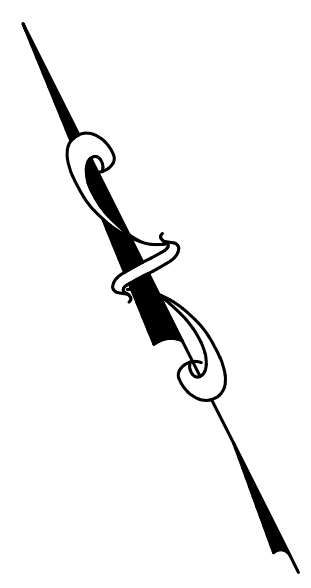
REVISED BY FERNANDEZ, JORLETT, KIEF & TRACEY
TO SHOW CONDITIONS AS OF MAR. 1969
REVISED MAR. 1972

REVISED BY WILCOX, GRAVATT & HACUNDA, INC.
TO SHOW CONDITIONS AS OF JUL. 1977 - JUL. 1980

REVISED BY WILCOX & GRAVATT, INC.
TO SHOW CONDITIONS AS OF JUL. 1980
REVISED OCT. 1984

REVISED BY OWEN, LITTLE & ASSOCIATES INC.
TO SHOW CONDITIONS AS OF DEC. 1985
REVISED DEC. 1986 - JAN. 2008

SHEET 6



TIDELANDS LICENSE #08-0147

RIPIARIAN GRANTS

TIDELANDS LIC. #90-0225

S.D.R.E.
DEED OF DEDICATION AND PERPETUAL STORM DAMAGE REDUCTION EASEMENT.

- NOTES:
1. THIS MAP HAS BEEN REDRAWN USING COMPUTER AIDED DRAFTING/DESIGN (CAD/D) BASED ON THE MAP PREPARED BY FERNANDEZ, JORLETT, KIEF & TRACEY.
 2. THE ABOVE REFERENCED TAX MAPPING WAS LAST APPROVED BY THE NEW JERSEY DEPARTMENT OF THE TREASURY, DIVISION OF TAXATION, PUBLIC UTILITY TAX BUREAU ON MAY 20, 1970, SERIAL NO. 489.
 3. THE ORIGINAL APPROVED MAP IS ON FILE IN THE TOWNSHIP ASSESSORS OFFICE.
 4. ALL LOTS THAT CONTAIN LAND EAST OF THE BULKHEAD LINE ARE SUBJECT TO A DEED OF DEDICATION AND PERPETUAL STORM DAMAGE REDUCTION EASEMENT.

TAX MAP
BOROUGH OF HARVEY CEDARS
OCEAN COUNTY, NEW JERSEY

SCALE: 1"=100'
PREPARED BY:
FERNANDEZ, JORLETT, KIEF & TRACEY
PROFESSIONAL ENGINEERS & LAND SURVEYORS
16TH & LONG BEACH BOULEVARD, SHIP BOTTOM, NJ 08008
DATED MARCH 11, 1969

SHEET 4

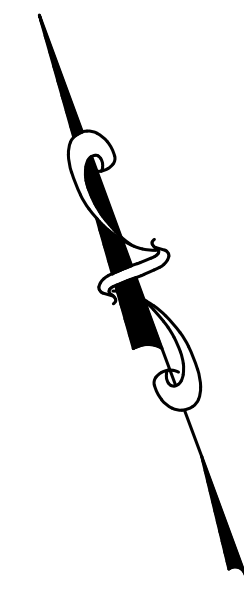
REVISIONS		
1-6-2009	WILLIAM J. BERG	24GS03622800
10-26-2009	WILLIAM J. BERG	24GS03622800
12-15-2009	WILLIAM J. BERG	24GS03622800
6-10-2010	WILLIAM J. BERG	24GS03622800
12-15-2010	WILLIAM J. BERG	24GS03622800
12-11-2014	WILLIAM J. BERG	24GS03622800
12-16-2015	WILLIAM J. BERG	24GS03622800
1-1-2019	WILLIAM J. BERG	24GS03622800

REVISED BY FERNANDEZ, JORLETT, KIEF & TRACEY TO SHOW CONDITIONS AS OF MAR. 1969
REVISED MAR. 1972

REVISED BY WILCOX, GRAVATT & HACUNDA, INC. TO SHOW CONDITIONS AS OF JUL. 1977 - JUL. 1980

REVISED BY WILCOX & GRAVATT, INC. TO SHOW CONDITIONS AS OF JUL. 1980
REVISED OCT. 1984

REVISED BY OWEN, LITTLE & ASSOCIATES INC. TO SHOW CONDITIONS AS OF DEC. 1985
REVISED DEC. 1986 - JAN. 2008



SHEET 7



BARNEGAT BAY

ATLANTIC OCEAN

SHEET 5

- NOTES:
1. THIS MAP HAS BEEN REDRAWN USING COMPUTER AIDED DRAFTING/DESIGN (CAD/D) BASED ON THE MAP PREPARED BY FERNANDEZ, JORLETT, KIEF & TRACEY.
 2. THE ABOVE REFERENCED TAX MAPPING WAS LAST APPROVED BY THE NEW JERSEY DEPARTMENT OF THE TREASURY, DIVISION OF TAXATION, PUBLIC UTILITY TAX BUREAU ON MAY 20, 1970, SERIAL NO. 489.
 3. THE ORIGINAL APPROVED MAP IS ON FILE IN THE TOWNSHIP ASSESSORS OFFICE.
 4. ALL LOTS THAT CONTAIN LAND EAST OF THE BULKHEAD LINE ARE SUBJECT TO A DEED OF DEDICATION AND PERPETUAL STORM DAMAGE REDUCTION EASEMENT.

TAX MAP
 BOROUGH OF HARVEY CEDARS
 OCEAN COUNTY, NEW JERSEY
 SCALE: 1"=100'
 PREPARED BY:
 FERNANDEZ, JORLETT, KIEF & TRACEY
 PROFESSIONAL ENGINEERS & LAND SURVEYORS
 16TH & LONG BEACH BOULEVARD, SHIP BOTTOM, NJ 08008
 DATED MARCH 11, 1969

REVISIONS		
1-6-2009	WILLIAM J. BERG	24GS03622800
12-15-2009	WILLIAM J. BERG	24GS03622800
12-15-2010	WILLIAM J. BERG	24GS03622800
12-16-2013	WILLIAM J. BERG	24GS03622800
12-16-2015	WILLIAM J. BERG	24GS03622800
1-1-2020	WILLIAM J. BERG	24GS03622800

REVISED BY FERNANDEZ, JORLETT, KIEF & TRACEY TO SHOW CONDITIONS AS OF MAR. 1969
REVISED OCT. 1972

REVISED BY WILCOX, GRAVATT & HACUNDA, INC. TO SHOW CONDITIONS AS OF JUL. 1977 - JUL. 1980

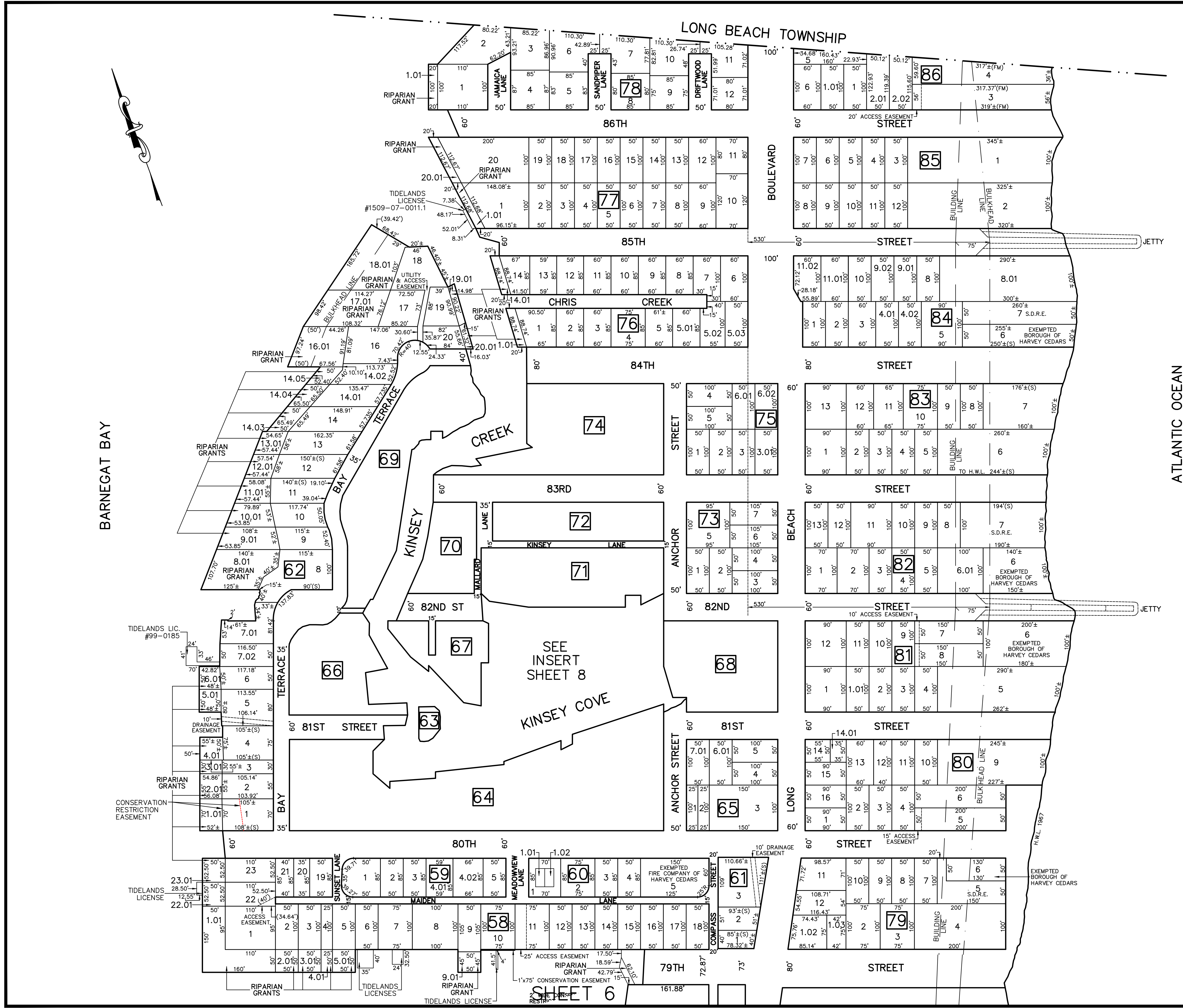
REVISED BY WILCOX & GRAVATT, INC. TO SHOW CONDITIONS AS OF JUL. 1980
REVISED OCT. 1984

REVISED BY OWEN, LITTLE & ASSOCIATES INC. TO SHOW CONDITIONS AS OF DEC. 1985
REVISED DEC. 1986 - JAN. 2008

S.D.R.E.
DEED OF DEDICATION AND PERPETUAL STORM DAMAGE REDUCTION EASEMENT.

- NOTES:
1. THIS MAP HAS BEEN REDRAWN USING COMPUTER AIDED DRAFTING/DESIGN (CAD/D) BASED ON THE MAP PREPARED BY FERNANDEZ, JORLETT, KIEF & TRACEY.
 2. THE ABOVE REFERENCED TAX MAPPING WAS LAST APPROVED BY THE NEW JERSEY DEPARTMENT OF THE TREASURY, DIVISION OF TAXATION, PUBLIC UTILITY TAX BUREAU ON MAY 20, 1970, SERIAL NO. 489.
 3. THE ORIGINAL APPROVED MAP IS ON FILE IN THE TOWNSHIP ASSESSORS OFFICE.
 4. ALL LOTS THAT CONTAIN LAND EAST OF THE BULKHEAD LINE ARE SUBJECT TO A DEED OF DEDICATION AND PERPETUAL STORM DAMAGE REDUCTION EASEMENT.

TAX MAP
 BOROUGH OF HARVEY CEDARS
 OCEAN COUNTY, NEW JERSEY
 SCALE: 1"=100'
 PREPARED BY:
 FERNANDEZ, JORLETT, KIEF & TRACEY
 PROFESSIONAL ENGINEERS & LAND SURVEYORS
 16TH & LONG BEACH BOULEVARD, SHIP BOTTOM, NJ 08008
 DATED MARCH 11, 1969



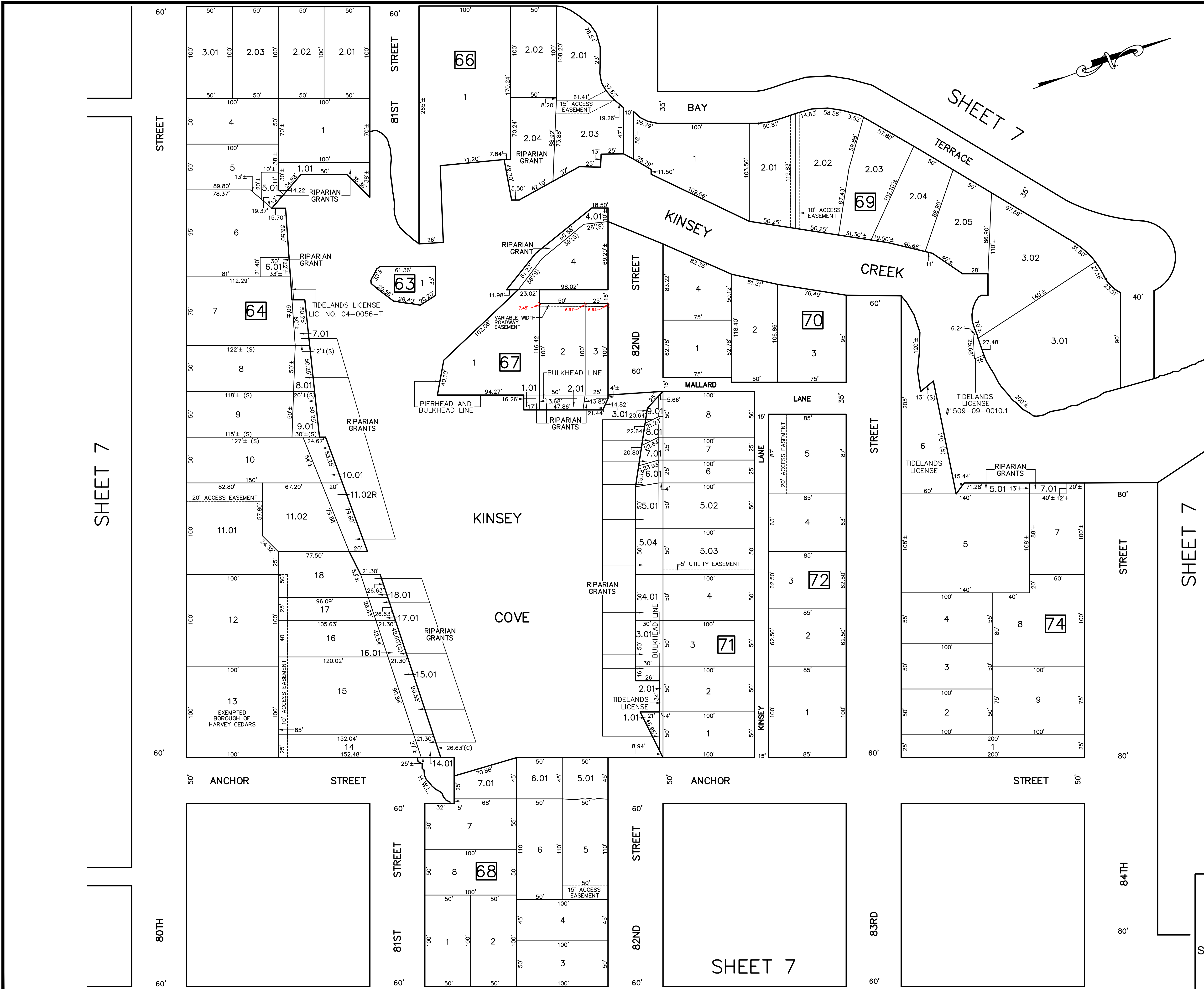
REVISIONS		
1-6-2009	WILLIAM J. BERG	24GS03622800
12-15-2010	WILLIAM J. BERG	24GS03622800
12-11-2014	WILLIAM J. BERG	24GS03622800
1-1-2020	WILLIAM J. BERG	24GS03622800

REVISED BY FERNANDEZ, JORLETT, KIEF & TRACEY TO SHOW CONDITIONS AS OF MAR. 1969 REVISED MAR. 1972

REVISED BY WILCOX, GRAVATT & HACUNDA, INC. TO SHOW CONDITIONS AS OF JUL. 1977 - JUL. 1980

REVISED BY WILCOX & GRAVATT, INC. TO SHOW CONDITIONS AS OF JUL. 1980 REVISED OCT. 1984

REVISED BY OWEN, LITTLE & ASSOCIATES INC. TO SHOW CONDITIONS AS OF DEC. 1985 REVISED DEC. 1986 - JAN. 2008



- NOTES:
1. THIS MAP HAS BEEN REDRAWN USING COMPUTER AIDED DRAFTING/DESIGN (CAD/D) BASED ON THE MAP PREPARED BY FERNANDEZ, JORLETT, KIEF & TRACEY.
 2. THE ABOVE REFERENCED TAX MAPPING WAS LAST APPROVED BY THE NEW JERSEY DEPARTMENT OF THE TREASURY, DIVISION OF TAXATION, PUBLIC UTILITY TAX BUREAU ON MAY 20, 1970, SERIAL NO. 489.
 3. THE ORIGINAL APPROVED MAP IS ON FILE IN THE TOWNSHIP ASSESSORS OFFICE.

TAX MAP
 BOROUGH OF HARVEY CEDARS
 OCEAN COUNTY, NEW JERSEY
 SCALE: 1"=50'
 PREPARED BY:
 FERNANDEZ, JORLETT, KIEF & TRACEY
 PROFESSIONAL ENGINEERS & LAND SURVEYORS
 16TH & LONG BOULEVARD, SHIP BOTTOM, NJ 08008
 DATED MARCH 11, 1969

SHEET 7

SHEET 7

SHEET 7